



Shanklea Primary School

Headteacher – Mrs Helen Brown
B.Ed(Primary)Hons, Dip.(Humanities) NPQH

Telephone : 01670 715205

Email: admin@shanklea.northumberland.sch.uk

Website: www.shanklea.northumberland.sch.uk

Nairn Road, Parkside Chase, Cramlington, Northumberland NE23 1RQ

Friday 20th November 2020

Dear Parents and Carers



Weekly Newsletter

Staying Safe

Can we please remind families of the need to keep children close to them as they vacate our site at the end of the day. Whilst it is wonderful for children to have fun running around and greeting each other we do need to ensure that bubbles remain separate. To ensure everyone's safety children should not touch or climb on the adventure equipment. Your help is very much appreciated.

Despite reminders following recent near accidents, a few families are still bringing cars onto the road in front of school. **PLEASE** park further away and walk into school with your child(ren).

Christmas Is Coming!



School bells are sounding again and the 'Quality Street' tubs (other tinned sweets are of course available) and advent calendars are creeping back in the supermarkets. It can only mean one thing - Christmas is just around the corner.

Coronavirus restrictions mean we are not able to proceed with some of our normal Christmas celebrations this year, but that doesn't mean we can't enjoy the season.

Despite all the uncertainty, there are many festive activities taking place in our local Cramlington community and, of course, our school. It's all about a community coming together. And, most importantly, it's about hope.

Christmas 2020 brings with it a chance for celebration and a welcome relief from what's been a whirlwind of a year. **It won't be a conventional Christmas but it will be special for everyone.**

Shanklea Primary School is making a significant investment into not only making sure that the children still have a great Christmas experience but are also able to enjoy the Christmas period in a safe and responsible way. Pupils will come together to celebrate Christmas this year in the only way they can, Covid-safely.



With everything that has happened this year, we felt like we needed to do something extra special and you're never too old to feel the magic of Christmas - so we are preparing for the festive period with a host of innovative plans to make this year's Christmas experience more magical and memorable than ever. We are delighted to announce that the **Shanklea Festive Fun Fortnight** will run from **Monday 7th December** to **Friday 18th December 2020**.



Shanklea Primary School

Headteacher – Mrs Helen Brown
B.Ed(Priamry)Hons, Dip.(Humanities) NPQH

Telephone : 01670 715205

Email: admin@shanklea.northumberland.sch.uk

Website: www.shanklea.northumberland.sch.uk

Nairn Road, Parkside Chase, Cramlington, Northumberland NE23 1RQ



The traditional decorated Christmas trees will be outside in situ and we plan to have the school yard sparkling with shine from our Christmas lights. Glistening lights and over-sized baubles hanging from the rafters, Shanklea staff decked out in Santa hats, 'Merry Xmas Everybody' playing over the speakers. While we're still expecting the traditional soundtrack – because there's nothing like a bit of Wham! and Wizzard to lift the spirits – the impact of coronavirus means things will play out a bit differently and possibly MORE loudly this year!

We aren't letting anything like a pandemic stand in the way of this annual extravaganza. Staff are coming up with wonderful ways to make sure every child still gets the chance to wave virtually at a parent or carer while dressed in a Christmas costume or jumper too.

So, families should hold on to their Christmas party hats, because they're in for a treat. It may all be talk of tiers and lockdowns out there, but in our school the creative juices are flowing, with some amazing ideas doing the rounds. Teachers are creating a whole-school production filmed in separate bubbles and then stitched together to be accessed from home; others are dutifully getting everyone dressed, heading to the stage and streaming it later; part of our plan includes a grand switch-on of the Christmas lights amidst the 'Winter Wonderland' in the Early Years settings and Lapland races around the playground, we intend to keep the festive spirit alive within our school community in the run up to Christmas! More details will be posted onto our Facebook pages.

Christmas Raffles

We are delighted to tell you we will be holding two **Christmas Raffles** this year: one for the **children** and the other for the **grown-ups**. To stay Covid-safe, virtual tickets will be bought online on the School Gateway and entered into a prize draw to win a fantastic hamper. **Tickets** are still only **£1** each.

The Secret Elves Club

This week we are launching **The Secret Elves Club** - and everyone who joins will be entered into a prize draw to win **£100** to put towards your Christmas shopping. Each virtual ticket costs **£2** – please pay on the School Gateway.

*The winner of the Secret Elves Club will have a sprinkling of Christmas magic delivered directly to them. If we could fill it with glitter we would, really.

Best Decorated Window



We are challenging families to enter the best decorated window competition. Please email photos to your child's teacher or to admin@shanklea.northumberland.sch.uk. Entries cost **£1**, again payable on the School Gateway.





Shanklea Primary School

Headteacher – Mrs Helen Brown
B.Ed(Priamry)Hons, Dip.(Humanities) NPQH

Telephone : 01670 715205

Email: admin@shanklea.northumberland.sch.uk

Website: www.shanklea.northumberland.sch.uk

Nairn Road, Parkside Chase, Cramlington, Northumberland NE23 1RQ

Panto Time

It's panto season again (oh no it isn't!) on **Wednesday 9th December 2020**. Staff are working on our own personalised Shanklea School show of Sleeping Beauty to inject some festive fun into the end of term! Many of us are looking forward to some much-needed Christmas cheer and laughter.

OOSC Christmas Shopping Nights

Our Out of School Club will be holding extended sessions from 7th December to 17th December 2020. We will be open for up to 30 pupils until 6.30p.m. Sessions will cost £10 per child and may be booked on the School Gateway from Monday 23rd November 2020



Remotely Christmas with Cramlington Town Council

Friday 11 December 2020, is Christmas Jumper Day and it will be a wonderfully Christmassy Day for lots of Northumberland schools.

At Shanklea:

- Children will be able to watch Santa at Northumberland Zoo via a live stream.
- Elves will bring colouring books and pencils into the school – the children will see the elves on screen and then they will magically appear in the school.
- There will be lots of fun activities throughout the day in a festival atmosphere.

There are also some workshops leading up to the day which will be recorded, edited and streamed out too. These include cooking, making your own Christmas presents, Christmas art and zany drawings. It will be a truly multi-generational day. This will include sessions for adults at home and Care Homes; and for families in their homes. We will provide more details soon.

We are all set to enter into the festive spirit during lessons too! Here is our **Christmas Curriculum Coverage**:

Shanklea's Community Christmas in EYFS

EYFS will be completing an array of different activities during this Christmas period. Our EYFS will be turned into a magical winter wonderland with Santa and his Elves working hard.

In Literacy we will be writing our Christmas letters to Santa focusing on the sounds and letter formation we have learnt during the Autumn term. We will be listening to a range of Christmas stories to develop our use of story language, joining in with repeated refrains and





Shanklea Primary School

Headteacher – Mrs Helen Brown
B.Ed(Primary)Hons, Dip.(Humanities) NPQH

Telephone : 01670 715205

Email: admin@shanklea.northumberland.sch.uk

Website: www.shanklea.northumberland.sch.uk

Nairn Road, Parkside Chase, Cramlington, Northumberland NE23 1RQ

discussing the festive characters in the book. We will also be sharing the story of the very first Christmas with the children.

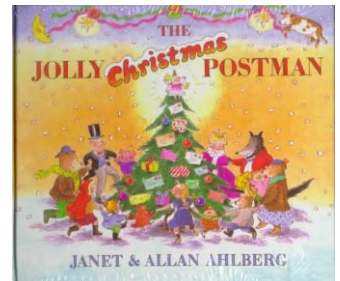
In Maths, we will be covering work on positional language, looking at key words and phrases such as, *on, behind, under, next to* and *in front of* and discussing where the elves have placed the presents. We will also be looking at weights and measures where we will be helping the elves to weigh some of Santa's parcels using balance scales, discussing which is the heaviest and lightest.



All of the children will also be taking part in lots of other fun activities including Christmas card making, calendars, a virtual pantomime to name but a few. We want to try and make this Christmas as special as we possibly can.

Shanklea's Community Christmas in Key Stage 1

Key Stage 1 will be completing an array of different activities during this Christmas period. During their English lessons the children will be focusing on the story '**The Jolly Christmas Postman**'. The children will be writing lists and letters to Father Christmas; creating instructions (Year 2) and following those instructions for their very own board game. The children will be looking at the vocabulary used in the story and understanding about the rhyme that has been used. The children will use what they have learnt from the story to create their own map of directions that the Jolly Postman will share with Father Christmas to help him deliver all of his presents.



In Maths, the main focus will be on 2D and 3D shape and the properties of those shapes, linking to 'The Jolly Christmas Postman' by looking at the presents that he has to deliver. All of the children will be looking at the nets of these shapes to create their own presents. Year 2 will also be looking at position and direction using some of Santa's elves to help them.

All of Key Stage 1 will be focusing on the Nativity story during R.E. The children will become more familiar with this Christian story and will be completing sequencing activities based on it. They will also be looking at the significance of 'Christingle' and the different Christian symbols that are linked with Christmas and their meanings.

All of the children will also be taking part in lots of other fun activities including Christmas card making, paper chain competitions, a virtual pantomime to name but a few. We want to try and make this Christmas as special as we possibly can.

Shanklea Primary School's Community Christmas in Lower Key Stage 2

In English we will be going on an unforgettable festive adventure with William Trundle in Tom Fletcher's **Christmasaurus**. So it's time to forget everything we thought we knew about the North Pole, and set off on a Christmas Eve adventure where we will meet an elf named Snozzletrump, Santa



Shanklea Primary School

Headteacher – Mrs Helen Brown
B.Ed(Primary)Hons, Dip.(Humanities) NPQH

Telephone : 01670 715205

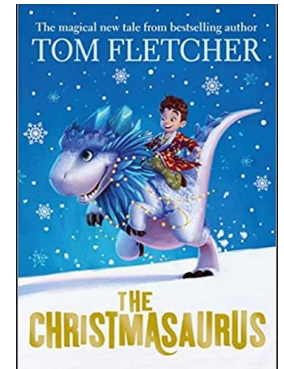
Email: admin@shanklea.northumberland.sch.uk

Website: www.shanklea.northumberland.sch.uk

Nairn Road, Parkside Chase, Cramlington, Northumberland NE23 1RQ

Claus (yes! The real Santa Claus!), a nasty piece of work called the Hunter, and a most unusual dinosaur. Throughout our adventures we will be creating characters, making rhymes, celebrating and accepting differences and having a whole lot of festive fun! In Maths the children will be using the bar model to explore and investigate measure and fractions using the Christmas theme as their inspiration.

The children will be enjoying a vast range of art and craft activities linked to Christmas. They will be creating their own amazing place mats, festive party hats and coasters to use throughout our exciting Christmas Dinner day. Following the Christmas lunch the children are going to have a special treat of our own personalised, virtual pantomime. Watch this space!!!



Shanklea Primary School's Community Christmas in Upper Key Stage 2



Year 5 and 6 will be enjoying a Dickensian Christmas based around the classic novel '**A Christmas Carol**'. In their English lessons they will study the character of Scrooge and develop their historical vocabulary and understanding of suspense. They will then mimic the style of Charles Dickens in their own writing. They will further extend their literacy skills through '**The Christmas Truce**' (Year 6) and '**The Night Before Christmas**' (Year 5).

In Maths the children will use their problem solving skills linked to measures, statistics and fractions which will also support them in their Dickensian Art and Technology activities. This will include producing decorations for their classroom and accessories for their Christmas dinner. Following the Shanklea virtual pantomime the children will create a piece of Victorian art linked to Sleeping Beauty.

We will be taking the opportunity to recap the Christmas story and deepen their understanding of the importance of the nativity to Christians.

Every opportunity will be taken to ensure the children have a Christmas to remember.

Thinking of others

As we enjoy the festive season, it is important to remember those in need. Families are invited to bring in donations for the food bank at St Nicholas' Church, Cramlington Village, to help those in need in our area. Items needed include:

- Food donations - non-perishable, in-date food donated by staff and families will be stored at the collection point on the school





Shanklea Primary School

Headteacher – Mrs Helen Brown
B.Ed(Primary)Hons, Dip.(Humanities) NPQH

Telephone : 01670 715205

Email: admin@shanklea.northumberland.sch.uk

Website: www.shanklea.northumberland.sch.uk

Nairn Road, Parkside Chase, Cramlington, Northumberland NE23 1RQ

site. It will be then sorted into emergency food parcels to be given to people in crisis. This means people can receive a food bank parcel of three days' nutritionally balanced, non-perishable food from their local church food bank.

- Women's deodorants - sprays and roll-ons. They have plenty for men.
- Soap powder in tablet form as they split boxes for single people and it's light for people to carry home.
- Nappies - Age 3 months onwards
- Washing-up liquid
- Instant mash
- Anything else that might be suitable for a Christmas dinner such as gravy granules, stuffing, Christmas puddings, mince pies, custard and white sauce etc.
- Small Christmas gifts - Items such as smellies for adults, small toys for children of all ages etc. Gifts must be brand new and in box/packet, with tags.

Festive Fun Fortnight

Competition 1: Christmas Hamper Raffle – enter on Gateway

Competition 2: Secret Elves Club – enter on Gateway

Competition 3: Best decorated window – enter on Gateway

Monday 7 th December 2020 Food bank Donations	Christmas Wish Tree OOSC Christmas Shopping Night 3.30-6.30p.m. (30 pupils max)
Tuesday 8 th December 2020 Food bank Donations	OOSC Christmas Shopping Night 3.30-6.30p.m. (30 pupils max)
Wednesday 9 th December 2020 Food bank Donations	Christmas Dinner day (pre-order via School Grid by 30.11.2020) Pantoland afternoon OOSC Christmas Shopping Night 3.30-6.30p.m. (30 pupils max)
Thursday 10 th December 2020 Food bank Donations	OOSC Christmas Shopping Night 3.30-6.30p.m.
Friday 11 th December 2020 Food bank Donations	'Remotely Christmas' with Cramlington Town Council Live-stream to Santa @ Edinburgh Zoo Interactive crafts, Elves, Festive Food, Games and quizzes. Shanklea selection boxes Competition Winners announced
Monday 14 th December 2020 Please do not send in party	Christmas Parties 9.00-10.00a.m. LB1/2 10.00a.m. KS1/2





Shanklea Primary School

Headteacher – Mrs Helen Brown
B.Ed(Pimary)Hons, Dip.(Humanities) NPQH

Telephone : 01670 715205

Email: admin@shanklea.northumberland.sch.uk

Website: www.shanklea.northumberland.sch.uk

Nairn Road, Parkside Chase, Cramlington, Northumberland NE23 1RQ

food.	1.00-2.00p.m. BD1/2 OOSC Christmas Shopping Night, 3.30-6.30p.m. (30 pupils max)
Tuesday 15th December 2020 Please do not send in party food.	Christmas Parties 9.00-10.00a.m. JR3 1.00-2.00p.m. ER4 10.00-11.00a.m. AH3 2.00-3.00p.m. SH4 OOSC Christmas Shopping Night, 3.30-6.30p.m. (30 pupils max)
Wednesday 16th December 2020 Please do not send in party food.	Christmas Parties 9.00-10.00a.m. Nursery 10.00-11.00a.m. Squirrels OOSC Christmas Shopping Night, 3.30-6.30p.m (30 pupils max)
Thursday 17th December 2020 Please do not send in party food.	Christmas Parties 9.15-10.15a.m. LG6 1.00-2.00p.m. SB5 10.15-11.15a.m. CC6 2.00-3.00p.m. RB5 OOSC Christmas Shopping Night, 3.30-6.30p.m (30 pupils max)
Friday 18th December 2020	Non- Uniform Day Christmas Community Carols and Lapland Dash and Disco School closes for Christmas and the New Year holidays
School re-opens on Tuesday 5 th January 2021	

Tik-Tok Safety Guide

We have sent a poster from the National Online Safety Team with this newsletter. You may also wish to visit their website using the following link:

<https://nationalonlinesafety.com/guides/what-parents-need-to-know-about-tiktok>

It has lots of simple tips about how to keep children safe while enjoying using Tik Tok and it explains how much of the music has explicit or suggestive lyrics but you can enable restricted mode to filter these and also set the account to private, choosing exactly who you want to view and comment on posts. It is updated regularly and even includes advice on games consoles which are currently being released in time for Christmas.



Shanklea Primary School

Headteacher – Mrs Helen Brown
B.Ed(Primary)Hons, Dip.(Humanities) NPQH

Telephone : 01670 715205

Email: admin@shanklea.northumberland.sch.uk

Website: www.shanklea.northumberland.sch.uk

Nairn Road, Parkside Chase, Cramlington, Northumberland NE23 1RQ

Scholastic Books

Don't forget that books may be ordered at <https://schools.scholastic.co.uk/shanklea-county/digital-book-club>.

There are hundreds of fantastic children's books to choose from, and **every £1 you spend** on this month's Book Club will **earn 20p for our school** in Scholastic Rewards. Please place your **order online by November 26th 2020**.



Congratulations to the **Shanklea Stars** of last week:

Jemima R

Sophie B

Michael M

Malika W

Lucas H

Harrison D

Zoey G

Leon M

Zeva V

Jacob T

Charlotte J

TJ G

Mathew J

You are all amazing



Thank you all for your continued support.

Take care and stay safe!

Kind regards,

Mrs H Brown
Head Teacher