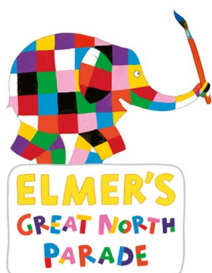


Shanklea Primary School

"We provide a happy, caring and stimulating environment where children recognise and achieve their fullest potential"

10.05.2019

Elmer's Great North Parade



In 2016, our streets, parks and public spaces were taken over by a pack of **Great North Snowdogs**, attracting over 670,000 visitors and bringing £16.5m to the local economy.

This summer, in August 2019, an even bigger set of feet will be parading through our streets, parks and coastline – **Elmer the Elephant's 'Great North Parade'**, in

support of St Oswald's Children's Hospice, is coming to Cramlington!

This stunning art trail, made up of individually designed sculptures, based on the much loved Elmer character will stomp its way across the region for 11 weeks from August to November 2019. Brought to you by **St Oswald's Children's Hospice** in partnership with **Wild in Art** and **Andersen Press** the trail will raise awareness of and raise funds for the Children's Hospice.

Shanklea Primary School has our very own elephant sculpture and will join Elmer's Great North Parade and provide our emerging artists with a brilliant platform for their talent.

Elmer's Great North Parade features the little patchwork elephant from one of the most iconic and widely read children's book series of all time. Written and illustrated by David McKee, Elmer was published by Andersen Press in 1989 and the brightly coloured patchwork elephant now features in a number of original stories, activity books, toys and on clothing.

The children attended a Shanklea Launch Assembly this week and SHOULD have lots of news to share with their families.

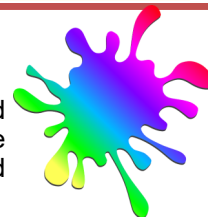
Elmer Designs

We will send out a factsheet and blank Elmer outline with this newsletter so children can design their own Elmer. Please make sure your child's name is clearly shown (we know it says Elmer name but we need to know the artist too!) and return entries to either the office or Mr Rutherford by **Friday 17th May**. Blank outlines may be collected from the office if you prefer.

Shanklea Arts Council

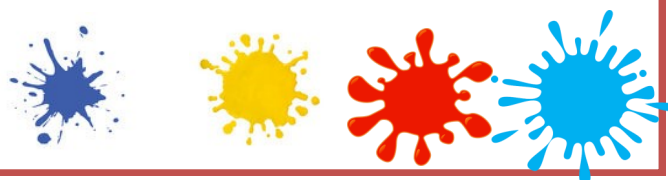


We are extremely proud to announce the formation of our first ever student led Arts Council.



Congratulations to the following students: **Abigail G, Kacy W, William L, Nell T, Ben W, Ella E, Jayden M, Thomas B, Lily D, Mackenzie T, Bronson M, James R, Imogen M, Eleanor G.**

There was a tremendous response with lots of children expressing an interest in joining and who now form the **Shanklea Arts Council Consultant Team.**



Shanklea Polling Station



We can now confirm that school has to close on **Thursday 23rd May** for the European Elections take place.

Please note we are not permitted to stay open as the site has to be cleared for the elections. Thank you for your patience.

ELMER'S GREAT NORTH PARADE
A WILD IN ART EVENT IN SUPPORT OF ST OSWALD'S HOSPICE

Help Shanklea Design Elmer!

An exciting project has stamped through our doors this week and we need your help! As we stomp closer to the Great North Parade, we need your help to design Shanklea's very own Elmer that will join the rest of the herd in some short weeks.

Shanklea's dedicated **Student Arts Council** have been working hard behind the scenes and deliberating over some design element that they feel could be included in your design entries. Please consider including the following:

- Our Shanklea 'SPS' logo.
- Our school mottos 'Be the best you can be' and 'Give it all you've got!'
- Reflect on the ethos and qualities that we promote at Shanklea and use this as inspiration of your design.
- Bright colours and eye catching BUT not too complex.
- Make it as unique as each and every single one of us!

Please return your design proposal to school (or Mr Rutherford) by **Friday 17th May**.
Join the herd and ENJOY designing!

www.greatnortherner.co.uk
f/greatnortherner @greatnortherner

ELMER'S GREAT NORTH PARADE STOMPS INTO THE REGION ON 21ST AUGUST - 24th September 2019

St Oswald's Hospice, Regent Avenue, Gosforth NE5 3EE. Registered no. 502059

Andersen Press

Good Luck To All Year 6 Pupils Sitting Their SATs Exams Next Week – Do Your Best & You Will Be Fine!

Next week, Year 6 children all over the country are taking their SATs. They will take tests in Reading, SPAG (Spelling Punctuation and Grammar) and Mathematics. We are so proud of the effort our Year 6 children, their teachers, tutors and teaching assistants have put in, the support their parents have given them and we know they will all do their best.

Shanklea students have such a mature and good attitude towards the tests. In fact, this is a great opportunity for them to show off their learning.

We hope they enjoy their (free) special breakfasts at school to give them extra energy for the testing days ahead!



Shanklea Primary School

"We provide a happy, caring and stimulating environment where children recognise and achieve their fullest potential"



National Love a Tree Day

May 16 of each year honours 'National Love a Tree Day'. On this day, trees are celebrated and recognized for the wonderful gift that they are to us. National Love a Tree Day is also in the middle of Garden for Wildlife Month.

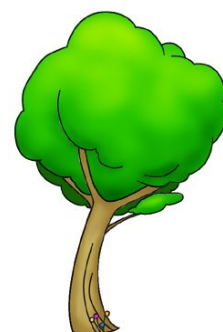
Most species of trees tend to be long-lived. There are some trees live to be several thousand years old. The tallest known tree is 379 ft. tall.

Trees provide more than just beautiful landscapes and a shady canopy on a sunny day. They play a significant role in reducing erosion and moderating the climate as well as give us oxygen. Large quantities of carbon are stored in their tissues as trees remove carbon dioxide from the atmosphere.

Trees are a vital part of nature. This is a good day to plant a new tree or spend some time enjoying the beauty of the trees that are all

around you. Use #LoveATreeDay to post on social media.

We want to make sure that everybody Shanklea Primary School has the chance to plant a tree. So, with support from the Woodland Trust we have made a bid for a large quantity of saplings.



NATIONAL LOVE A TREE DAY
THURSDAY 16TH MAY 2019
(Pre order on Live Kitchen)

Hot Dogs
or
 Meatball Subs

Served with Chips & Beans

~

Selection of assorted goodies

Did you know.....
Trees provide more than just beautiful landscapes and a shady canopy on a sunny day. They play a significant role in reducing erosion and moderating the climate as well as give us oxygen. Large quantities of carbon are stored in their tissues as trees remove carbon dioxide from the atmosphere.

Shanklea Primary School recognises that teaching outdoors helps encourage curiosity and stimulates all the senses in a way that indoor learning simply cannot do. With our Woodland resources, we can do more truly rewarding learning with our pupils and inspire them about the UK's incredible trees, woods and wildlife.

We continue to work towards the Platinum Green Tree Schools Award where tree planting is a fun and engaging way to get your pupils outdoors enjoying themselves while making a positive difference to the environment.

Love a Tree Themed Lunch

Please make sure you have pre-ordered your child's meal for this special lunch on Live Kitchen (School Grid).

Year 6 Author Visit

The children in Year 6 have been invited to attend an event "Imagining Dragons" with bestselling author Liz Flanagan on **Wednesday 22nd May 2019**.

To celebrate the publication of her new book, **Dragon Daughter**, Liz Flanagan will talk about her books and being an author. In her interactive talk, she will explore the appeal of dragons across the world, with a dragon quiz and a lucky dip of magical props. She'll talk about the process of capturing ideas, how a book is made, and invite the students to imagine their own fantastic beast.

Last week's attendance

Class of the week with **99.5%** attendance is **BD2**

Well done Year 2

Year Group	Average Attendance
Reception	96.4
1	97.3
2	97.8
3	96.9
4	96.3
5	96.9
6	93.5

National Children's Day

National Children's Day, (NCDUK) a UNICEF initiative, is all about the importance of a healthy childhood and how we need to protect the rights and freedoms of children in order to ensure that they can grow into happy, healthy adults. Now in its 6th year, NCDUK has steadily grown in volume, interest and participation and the reach for 2018 was in excess of 5 million.

From small family and community get-togethers, to city celebrations and county-wide events, it's a day when everybody involved with children can help raise awareness and funding for great local projects and the things that they care about.

There are lots of details about the day on the website www.nationalchildrensdayuk.com.

If you undertake any activities for National Children's Day please let the School Office know. We will work alongside the Northumberland Council Communication team to ensure your event is covered via social media and the press.



Shanklea Primary School

"We provide a happy, caring and stimulating environment where children recognise and achieve their fullest potential"

Deaf Awareness Week

'Deaf Awareness Week' is a unique campaign to further raise awareness and challenges of deafness and hearing loss faced by 1 in 6 people in the UK.

The campaign runs from 6th – 12th May and this year we are celebrating role models.

The Deaf Council are also encouraging people to promote their deaf role models to show the positive side of deafness and give inspiration to all. If you have something to send to them for their blog during the week please send it to info@deafcouncil.org.uk with heading **DAW BLOG**

Deaf Awareness Week aims to promote the positive aspects of deafness, promote social inclusion and raise awareness of the huge range of local organisations that support deaf people and their family and friends.

Why not **NOMINATE YOUR DEAF ROLE MODEL NOW** and join in the celebration!

Create a Character Competition

Maisha and **Ella** in Year 5 are writing a book about a naughty girl who is very annoying and are offering a lucky winner the chance to add a character. There will be certificates and castle points for the best entries.

They have created an exciting competition so children can have their own character feature in the story. If your child would like to take part, they should draw the character and add some brief notes about the character's, name, age and gender.

Can all entries be sent to the office by **lunchtime next Thursday** please.



Coming Soon

Monday 13th – Y6 SATs, free breakfast club
Thurs 16th

Wed 15th No Little Monkeys Toddler Group
Last Day to sign up for Children's Cancer Run at <https://www.nccr.org.uk/event/childrens-cancer-run-2019/>

Thurs 16th Love A Tree Themed lunch

Friday 17th Y6 party afternoon

Monday 20th Year 4 Segedunum Trip

Tuesday 21st Year 3 Segedunum Trip

Wednesday 22nd May Little Monkeys Toddler Group
Year 6 author visit

Thurs 23 May School closed for elections

Friday 24th May 3.15pm FOS Cake Sale
School closes

Monday 3rd June School reopens

Friday 7th June Non uniform day

Sat 15th June 10am—6pm Family Fun Day at Parkside Field



Friends of Shanklea Events

On the last day of term, **Friday 24th May**, Friends of Shanklea will be holding a **cake sale** on the yard. Donations are optional but very welcome. Please come along and treat yourselves!

This year instead of a summer fair, Friends of Shanklea will have stalls at the **Family Fun Day** at Parkside Field on **Saturday 15th June**, 10am to 6pm. We hope you will all be able to come along to enjoy the day and raise some funds for our school.

If you are having a clear out of unwanted gifts over the half term we would be very grateful for any donations for the raffle and/or tombola. We will be hosting a non uniform day on **Friday 7th June** to say thank you for raffle and tombola donations.

Starting in June, FOS will be starting **"Cool Down Fridays"**. We will provide more information soon.

Friends of Shanklea

Join Friends of Shanklea

Alone we can do so little;



together we can do so much.

Contact the office if you can help



Friday 24th May 2019
3.15pm

