

# Shanklea Stars of the Week

★ ★

★ These children have been recognised by their teachers for exemplary attitude:

★ **Daniel Jones** always works hard in Literacy and Numeracy. He has worked particularly well this week when writing about himself in Literacy.

★ **Maxwell Riches** has shown he has amazing writing skills in Literacy.

★ **Gabriella Campbell** was very brave during our trip to St. Mary's Lighthouse. She picked up lots of sea creatures she found in the rock pools and went up all 137 steps to the top of the lighthouse.

★ **Daniel Morrison** is working so hard with all of his writing tasks. He was amazing at finding lots of creatures in the rock pools at St. Mary's Lighthouse too.

★ **Grace Coulson** has an excellent attitude towards her work and always strives to do her very best. She is a fantastic friend and is a role model to the class.

★ **Dexter Heatley** is putting 100% into his writing and produced an excellent account of our visit to the lighthouse.

★ **Blake James** demonstrated his vast knowledge and made a fantastic effort in our Topic lessons.

★ **Anas Chowdhury** has an excellent attitude to his written work and is showing a renewed focus in all of his work.

★ **William Maddison** has an excellent attitude to all of his work. He wrote an amazing extended story about Sinbad and his adventures.

★ **Eva Black** always takes a conscientious approach to her work.

★ **Charlie Doyle** has a fantastic attitude in all subjects. He retained his focus even when rehearsals were happening.

★ **Aimee Saward** has had a very hardworking attitude all year and is very helpful in class. She is a very mature and responsible member of our class.

★ **Evan Whitfield** and **Eve Fellows** have demonstrated great maturity and real acting talent.

★ **Ben Nicholson** gave an incredible dramatic performance and showed a fantastic ability to improvise.

★ **Charlie Hailes** is a really good friend at Out of School Club. He helped coach his friend on how to play tennis.

# Year 1 Creative Superstars

Following their visit to St Mary's Lighthouse, the children in Year 1 were given an open-ended, creative task for their Lighthouse Project. We are absolutely stunned by the results.

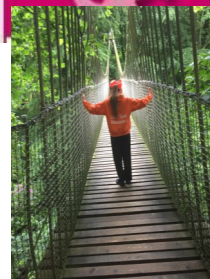
A huge **WELL DONE** to the children and their families who have worked together to achieve amazing things.





# Shanklea Primary School

"We provide a happy, caring and stimulating environment where children recognise and achieve their fullest potential"

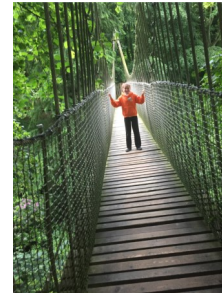
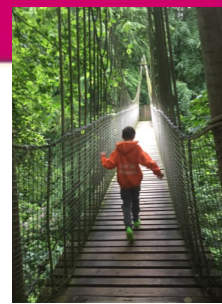


## Shanklea Wins Love Northumberland Award

On Wednesday night, two of our Travel Ambassadors, **Lexie Short** and **Harry Campbell** accompanied Mrs Brown, Mrs Hagan and Ms Rigg to the 'Love Northumberland' awards ceremony to receive the **Sustainable Schools Winner's Award**. We were very proud to receive a plaque from the Duchess of Northumberland at Alnwick Gardens.

In recognition of the work we completed, Shanklea Primary School will receive a fleet of balance bikes and helmets... we can't wait to play on them.

Well done and thank you to everyone whose hard work and enthusiasm has made this success possible.



## End of Term Finances

As we approach the end of another school year, we need to ensure that all our finances are up to date.

Please can all parents ensure that all outstanding balances are cleared ready for the next academic year.

If anyone has any difficulties please contact our Business Manager, Miss Brown, in the office to discuss options. Thank you.

## What's on at OOSC

Our OOSC theme next week is "**Summer Fun.**" Children will be doing lots of fun activities including Golf, outdoor adventures, Hide and Seek and many others

## Reception Graduation

Parents and carers are invited to come along to our Reception graduation ceremony at **9.30am** on **Tuesday 11th July 2017**.

Refreshments will be on sale in the school hall from 9am. We hope you can come along to share the children's proud moments.

## Year 6 Leavers Assembly

Parents and carers are invited to our Year 6 Leavers Assembly on **Thursday 13th July at 2pm**.

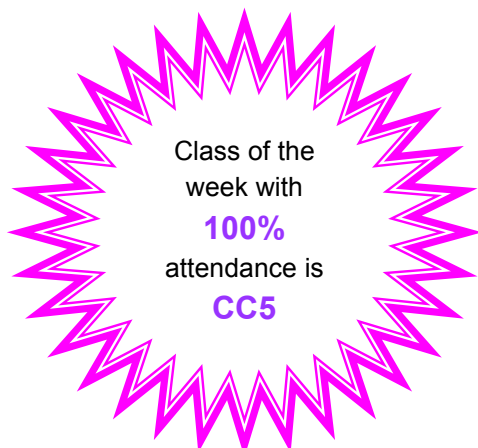
The children are looking forward to sharing their experiences and learning with you. There will also be a chance to catch up on some of our Edinburgh activities. A buffet of light refreshments, made by the children and staff, will be provided.

## Parking problems- We have good news

We have been working hard on our ongoing efforts to improve parking and drop-off options and to reduce problems in the surrounding streets.

From **September 2017**, parking bays will be available at the beginning and close of the school day at the Masonic Hall in Cramlington Village. The hall is a short walk to school and so will provide a much needed local place for parents to park while they drop-off or collect their children.

We will provide more information shortly and would like to thank our Governors, Northumberland County Council Highways Department and, of course, the Freemasons, for their help in achieving this much needed solution.



## Last Week's Attendance

Year Group	Average Attendance %
Reception	98.6
Year 1	98.8
Year 2	99.1
Year 3	95.8
Year 4	98.3
Year 5	97.5
Year 6	95.5





# Shanklea Primary School

*"We provide a happy, caring and stimulating environment where children recognise and achieve their fullest potential"*

## SHANKLEA SCORES BEST SATS RESULTS EVER!

I am very pleased to be able to tell you that we have achieved our best ever results for the fifth year in a row!

I am sure you have seen in the national press that the expectations of the new national curriculum are much higher and that the national tests have become much harder. This is reflected in the fact that the national averages are lower than in previous years.

However, I am delighted to say that as a result of a great deal of exceptionally hard work from pupils and staff, we have once again 'bucked the trend' and achieved results which are well above the national average across the school age range

Reception EYFS Profile

Year 1 Phonic Screening

Year 2 SATs

End of Year 6 SATs

Our **Year 6** children undertook the more challenging, 2017 KS2 SATs and showed us all what a talented and dedicated group they are. (We already knew that though). Are they Secondary ready? Absolutely! Well done year 6 - soon to be year 7. **We are so proud of you all.** **Best results ever!**

We continue to be committed to ensuring children receive an excellent education at Shanklea Primary School and helping them to achieve their full potential.

I am delighted that our children have done so well. They should all be very proud of themselves.



### Cryptic Competition

*I feel it in my fingers,  
I feel it in my toes...  
Edinburgh's all around us,  
And so the feeling grows....*



The majority of Year 6 travelled to Edinburgh this week to enjoy their final Shanklea residential trip. We ventured back in time...experienced the evolution of the Earth where we were all shook up and let it go in the frozen polar landscapes. Walking what felt like 500 miles, we gazed at the castle in the sky.

At Camera Obscura, the children thought they had become faster, better and stronger as if it were a kinda magic but it was all just an illusion.....

Then and there it was wet, wet, wet – we trekked up to the castle on the hill and were all fired up as the roar of the cannonball went BOOM!



Spinning around at The National Museum of Scotland, we were chasing cars, making ourselves dizzy; saw (9 million) bicycles; walked like Egyptians; learnt that crocodiles rock, climbed aboard the rocket ship and prepared for a life on Mars.

Strolling down Penny Lane, the children saw lots of money, money, money and were asked Who Wants To Be A Millionaire?

Edinburgh turned out to be a Ghost Town as all were led on a Magical Mystery Tour. It was such a thriller, the children had to scream and shout to let it all out!

Whilst on Monday night, the children were sleeping with the lights on; by the second evening there was nothing but the sound of silence. By Wednesday, it was necessary to Wake me up before we go go.

The final countdown - we could see clearly now that the rain had gone. The heat was on as we attended the picture perfect Botanical Gardens; creating masterpieces not in black or white but letting their true colours shine through. Oh, what an atmosphere!

After the long and winding road (A1), we were homeward bound.

All in all, what a trip – memories are made of this!



**£10 up for grabs for  
the lucky winner  
....let us know how  
many song titles  
you can find**

**Please write the song titles you have found and return them to school with your name by Wednesday 12th July. In the event of a draw, the winner will be randomly selected.**

**www.shanklea.northumberland.sch.uk**



# Shanklea Primary School

*"We provide a happy, caring and stimulating environment where children recognise and achieve their fullest potential"*

## Shanklea Sports Day

### Wednesday 12<sup>th</sup> July 2017: Early Years Sports Festival and Nursery Jungle Fun Day

9.30a.m. Morning Nursery children and Mrs Laughton's class

2.00p.m. Afternoon Nursery children and Mrs Morris's class

Nursery parents have received a separate letter with details of the Jungle Fun Day.

### Friday 14<sup>th</sup> July 2017: Main School Sports Day

9.30a.m. Key Stage 1

p.m. Key Stage 2

This is the children's chance to compete in lots of old school sports day favourites. There may even be a parents' race. So, if you never managed to participate in the egg and spoon race, the wheelbarrow race or other old favourite school sports day games, now is the time to do it.... **Good luck!!**

The children will be split into castle teams which will compete against each other in the different school sports day games throughout the tournament. The children are expected to arrive in school in the correctly coloured castle T-shirt and sports kit.

**Alnwick: Red**

**Dunstanburgh: Purple**

**Warkworth: Green**

**Lindisfarne: Orange**

**Ford: Blue**

**Prudhoe: Pink**

**Bamburgh: White \*\***

**Please note:** Bamburgh's castle colour is yellow but we would prefer children to wear white t-shirts as insects are drawn to the yellow ones.

All the games and races will be controlled by Mrs Brown, Ms Rigg (P.E Sports and Extra-curricular Coordinator) and our young sports leaders who will explain all the rules, make sure everybody sticks to them and keep score throughout the sporting events.

Hopefully the weather will be kind to us so can children please bring a bottle of water for re-hydration purposes. We hope you can come along and join in the fun .

**An ICE CREAM van will be coming along so parents MAY buy ice creams for their children.**

### Sports Week

We will be doing lots of sporting activities next week so can parents please ensure that **ALL** children have indoor and outdoor P.E. kit with them **EVERY** day. Thank you.



### Sports Day Picnic Lunches

To celebrate sports week we would like to invite all the children to a special picnic lunch. Nursery and Reception children will have theirs on **Wednesday 12th July** and the rest of the school on **Friday 14th July**.

Children will bring home a flier with more information. If parents wish to order a picnic lunch for their child can they please complete the slip and return it to school by **Tuesday 11th July 2017**. **Thank you**

### Tombola Donations and Non-uniform Day



Thank you to everyone who has so generously donated raffle and tombola prizes for our summer fair. The children (and staff) have enjoyed their non-uniform day and there have been some absolutely spectacular costumes.

**We look forward to seeing you all at the summer fair on Saturday 15th July**

**[www.shanklea.northumberland.sch.uk](http://www.shanklea.northumberland.sch.uk)**