

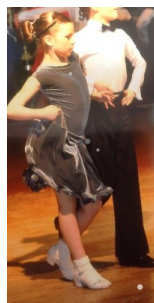
# Shanklea Primary School

"We provide a happy, caring and stimulating environment where children recognise and achieve their fullest potential"



Congratulations to **Lori Nicholson** who is quickly rising through the ranks at Karate achieving her Green Belt already. Well done, Lori.

## Shanklea Superstars



Congratulations to **Savannah Houlden** who is the worthy winner of the Northern Ballroom Dancing Competition.



Class of the week with **99.3%** attendance is **LMR**

**Ethan McLeod** is a Judo Superstar and has been awarded the Presidents Uchi-Komi Award.



**Isaac Polwarth** was recently selected to be a mascot at a Newcastle United football match. Well done, Isaac.



### Parents' Evening:

#### Reception and Years 1-5

Twice each year, we invite parents to come in and discuss student progress in a relaxed and informal atmosphere. The next set of parent consultations will be held after school on **Wednesday 8<sup>th</sup>** and **Thursday 9<sup>th</sup> March 2017, 3.30-6.30p.m.** for pupils in Reception and Years 1 to 5.

Appointments may be booked online at [cramlingtonshanklea.parentseveningsystem.co.uk](http://cramlingtonshanklea.parentseveningsystem.co.uk).

Please contact the office on 01670 715205 (or call in) if you have any problems or you can text us in the usual way.

### Mr Cartner's Class Assembly

# DC4

In honour of Shakespeare Week, which takes place during March, Mr Cartner's Year 4 class will be exploring William Shakespeare's life and works and how they translate onto the Shanklea stage!

Parents and carers are warmly invited to come and see our dramatic performance on **Tuesday 7<sup>th</sup> March 2017, 2.45p.m.** We look forward to seeing you.

### Coming Soon



Ms Rigg's Class Assembly (ER3) will be on **Wednesday 15th March, 2.45pm**

Please see the attached timetable for more events.

### Phone Problems



We sincerely apologise to anyone who has had problems contacting us by phone recently. The hardware problems have finally been resolved this week. Thank you for your patience.

# Welcome Back

### Moving Words

This Week '**Moving Words**' made another successful visit to Shanklea, delivering tailor-made workshops for Early Years and Key Stages One and Two.

Colin and Julie are very experienced ex-primary school teachers and provide dynamic and fun workshops which the children (and staff) really enjoy. The drama sessions were unique and especially written to enrich our primary curriculum.

Everyone thoroughly enjoyed the sessions (and learnt a lot too). Thank you, Colin and Julie.





# Shanklea Primary School

*"We provide a happy, caring and stimulating environment where children recognise and achieve their fullest potential"*



## UNIFORM AND SPORTS KIT

As the new half term starts, it is an opportune time to remind everyone of our School Uniform Policy.

Shanklea students must wear full school uniform (including acceptable footwear) on all school occasions and on the way to and from school. School uniform is an important feature of Shanklea Primary School, and on accepting a place for your child at the school parents agree to support us in this matter. Please note that everyone's behaviour reflects on all of us. Your child coming to and from school is a representative of the school and their uniform and behaviour should under no circumstances bring the school into disrepute.

There is more information about our uniform requirements on Page 24 of our school brochure which may be viewed on our website, [www.shanklea.northumberland.sch.uk](http://www.shanklea.northumberland.sch.uk).

## IMPORTANT NOTES



1. We do not allow extremes of hairstyle (including length, colour, borders, lines, patterns or decoration). Eyebrow patterns are not allowed.
2. Students must not wear jewellery of any kind except: (a) a wrist watch; and (b) one small pair of flat plastic stud inserts in the ears.
3. We do not allow any make-up (including nail varnish or false nails).
4. No variations from, or adaptations or additions to this dress list are allowed.



## Clothing and Personal Effects

1. All students doing PE must comply with the published uniform, appearance and kit requirements. Clothing and correct attire (including the removal of jewellery for example) represent important features of safe practice and clothing must be functional, clean, serviceable and fit for purpose – not a fashion statement.
2. Clothing should be light, allow good freedom of movement (without being baggy, loose or too tight) for indoor work and additionally, offer some insulation from cold weather for outdoor work in winter.
3. Footwear must be fit for purpose offering appropriate grip, support and protection depending on the activities being pursued.



**The personal effects listed below must be removed during sport activities:**

Jewellery   Watches   Hair slides   \*Rings   Body piercings   \*Sensory aids (spectacles etc)

*\*In some cases, these items may be retained in compliance with an appropriate risk assessment.*

Long hair worn by male or female students must be tied appropriately at the direction of the member of staff who has a duty of care to all students and must ensure each student endangers neither themselves nor other students.



The safety and welfare of students is paramount and the school cannot accept disclaimers from parents about the wearing of any item of jewellery by students. Such indemnities have no legal status. The duty of care remains firmly with the school on such matters. All students must comply with the directions of PE staff concerning clothing and personal effects.



Governors have agreed that the PE department at Shanklea Primary School is to abide by the guidelines published by the Association for Physical Education in their manual "Safe Practice in Physical Education and School Sport." This in effect therefore becomes the PE department's policy on safe practice with which all students must comply.



# Shanklea Primary School

"We provide a happy, caring and stimulating environment where children recognise and achieve their fullest potential"



## Fancy Feet Whirly Wheels Challenge

The Fancy Feet Whirly Wheels Challenge is back and will run for two weeks from **Monday 6 March to Friday 17 March 2017**.

The Challenge encourages pupils to walk, cycle or scoot to school for two weeks in March in order to earn points and give our school the chance to win one of three fabulous prizes, with 1st Gold place worth £750, 2nd Silver place worth £500 and 3rd Bronze place worth £250.

We want the challenge to be all inclusive, so if any children do have to come by car, they can park and stride; and there will also be points for those who do a lap of the playing field or yard, if the weather is inclement! As a thank you to the children, we will provide each child with Fancy Feet Whirly Wheel stickers that they can stick to their jumpers or school bags...

## Modeshift

As a prize for achieving the coveted National Modeshift Award, Shanklea Primary School will receive a visit from 'Histrionics' on the morning of **Thursday 16th March 2017** during a special assembly. A nationwide actor (from the BBC and ITV) will perform a variety of historical characters delivering fun and entertainment in an assortment of guises and enthusing everyone to try to walk to school. We won't spoil the surprise but it will be an amazing reward for everyone's hard work.



## Sainsbury's Active Kids Vouchers

Please send in your Sainsbury Active Kids vouchers as soon as you can. We have a collection box outside the office. Thanks.



## Shanklea Shiny Shoes Day—Friday 10th March

As part of the fancy Feet Whirly Wheels Challenge week we will be holding a special shiny shoes day on Friday 10th March.

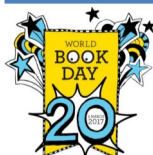
Children are asked to try to walk, cycle, scoot or park and stride to school on that day and wear favourite shiny shoes to celebrate. Children should come to school in their school uniform but with sparkly, glittery, stand-out shoes.

No donations are required—this is just for fun and to promote active journeys to school.

## Reading in Unusual Places Photo Competition



Thank you to everyone who has sent in entries to the photo competition. Winners will be announced shortly.



## Scholastic Book Orders

Your child should have brought home a Scholastic catalogue with an attached World Book Day voucher this week. If you wish to order from the Scholastic catalogue, you must return your form to the office by **Friday 17th March**. Thank you.

## OOSC - Important Message

**Out of School Club closes at 5.30pm.**

Parents **MUST** collect **ALL** children by this time. Failure to do so will incur a penalty charge of £5 to help cover staff and other costs.

It is important that parents pay for all OOSC or Breakfast Club sessions at the time of booking. Thank you.



Our Tuesday special will be Happy Faces.

## What's on at OOSC

Our theme for the week is "PHSCE Activities"

Monday	Tuesday	Wednesday	Thursday	Friday
Group Discussions	Feelings/judging people	Emotion graphs	Exploring Prejudice	Stereotyping





# Shanklea Primary School

*"We provide a happy, caring and stimulating environment where children recognise and achieve their fullest potential"*

## Spring 2 Timetable 2017

<b>Week 1</b>	<b>Voss Ski-Trip (25<sup>th</sup> February-5<sup>th</sup> March 2017)</b>
Monday 27 <sup>th</sup> February 2017	Y6 English Boosters 1.15-3.15pm Y5 Dance
Tuesday 28 <sup>th</sup> February 2017	Y1 Road Safety 3.30 pm Y5 Robinwood Parent Meeting
Wednesday 1 <sup>st</sup> March 2017	Little Monkeys' Toddler Group Moving Words Y6 Maths Boosters 3.30-5.00pm OOSC Open Evening
Thursday 2 <sup>nd</sup> March 2017	Moving Words 3.30—5.15pm KS2 Football Festival
Friday 3 <sup>rd</sup> March 2017	Moving Words World Book Day – Non-Uniform Day– Dress as a book character
<b>Week 2</b>	<b>Fancy Feet and Whirly Wheels (6<sup>th</sup> March-17<sup>th</sup> March 2017)</b>
Monday 6 <sup>th</sup> March 2017	Y6 English Boosters 1.15-3.15pm Y5 Dance
Tuesday 7 <sup>th</sup> March 2017	Y1 Road Safety 2.45pm Y4 DC Class assembly
Wednesday 8 <sup>th</sup> March 2017	Little Monkeys' Toddler Group Y6 Maths Boosters 3.30-6.00pm Reception –Y5 Parents' Evening
Thursday 9 <sup>th</sup> March 2017	9.30-11.30am Y5 Skipping Festival 3.30-6.00pm Reception –Y5 Parents' Evening
Friday 10 <sup>th</sup> March 2017	No Smoking Day Shiny Shoes Day
<b>Week 3</b>	<b>Fancy Feet and Whirly Wheels (6<sup>th</sup> March-17<sup>th</sup> March 2017)</b>
Monday 13 <sup>th</sup> March 2017	Y6 English Boosters Y5 Robinwood Residential Trip
Tuesday 14 <sup>th</sup> March 2017	Y1 Road Safety Y5 Robinwood Residential Trip
Wednesday 15 <sup>th</sup> March 2017	Little Monkeys' Toddler Group Y5 Robinwood Residential Trip 2.45p.m Y3 ER Class assembly 3.30-4.30pm Easter Nursery Intake Parents' Meeting
Thursday 16 <sup>th</sup> March 2017	Heights and Measures Reception and Year 6 Themed Walk To School from Cramlington Village 9.10a.m Whole School Historonics 'Travel In Time' Reception and Year 6 Historonics 'Travel In Time'
Friday 17 <sup>th</sup> March 2017	National Skipping Day
<b>Week 4</b>	
Monday 20 <sup>th</sup> March 2017	Y6 English Boosters 1.15-3.15pm Y5 Dance
Tuesday 21 <sup>st</sup> March 2017	Nursery Easter Crafts Parent Workshop Y1 Road Safety
Wednesday 22 <sup>nd</sup> March 2017	Sing Up Day Little Monkeys' Toddler Group Y6 Maths Boosters
Thursday 23 <sup>rd</sup> March 2017	2.45pm Y3 DW Class assembly 3.30-4.30pm YR5 Mixed Hockey at CLV
Friday 24 <sup>th</sup> March 2017	Comic Relief 2017



# Shanklea Primary School

*"We provide a happy, caring and stimulating environment where children recognise and achieve their fullest potential"*

<b>Week 5</b>	
Monday 27 <sup>th</sup> March 2017	Y6 English Boosters 1.15-3.15p.m Y5 Dance
Tuesday 28 <sup>th</sup> March 2017	Y1 Road Safety Reception visit to Whitehouse Farm Shanklea Musical Evening
Wednesday 29 <sup>th</sup> March 2017	3.30pm Easter intake - Squirrels Parents meeting Y6 Maths Boosters Little Monkeys' Toddler Group
Thursday 30 <sup>th</sup> March 2017	YR6 Hockey competition at CLV
Friday 31 <sup>st</sup> March 2017	9.00a.m -12.00 Noon Virgin Money Easter Enterprise at Newcastle Grainger Market Easter Around the World
<b>Week 6</b>	
Monday 3 <sup>rd</sup> April 2017	Y6 English Boosters 1.15-3.15p.m Y5 Dance
Tuesday 4 <sup>th</sup> April 2017	Reception Easter Crafts Parent Workshops Y1 Road Safety 6.30-8.30pm Dance Academy Showcase, The Sage, Gateshead
Wednesday 5 <sup>th</sup> April 2017	Nursery Home Visits – all day 9.30-11.45 Y3/4 Tri Golf Y6 Maths Boosters Little Monkeys' Toddler Group
Thursday 6 <sup>th</sup> April 2017	
Friday 7 <sup>th</sup> April 2017	Friends Of Shanklea - Egg Competition and Easter Event School closes for Easter Holidays
<b>Summer 1</b> Monday 24 <sup>th</sup> April 2017	School re-opens

## Extra-Curricular Clubs Timetable—Spring 2, 2017

	Morning	Lunchtime	Afternoon	After School
<b>Monday</b>	Breakfast Club	Sign Language	DC4 Swimming NUFC Football – Rec Y6 English Boosters	KS2 NUFC Football
<b>Tuesday</b>	Breakfast Club	Computer Club		Y5/6 Hockey Club
<b>Wednesday</b>	Breakfast Club Toddler Club	Computer Club	Y6 Maths Boosters	Y5/6 Netball Club
<b>Thursday</b>	Breakfast Club KS2 Dance	Computer Club KS1 Choir KS2 Choir	LG5 Swimming	Y6 Homework Club Y2/3/4 Rugby Club
<b>Friday</b>	Breakfast Club	Computer Club	School Council Travel Ambassadors	